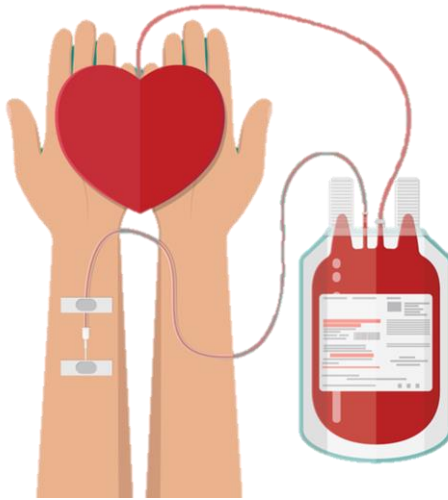




مدينة الملك فهد الطبية
King Fahad Medical City



Journey of Donor during Blood Donation

Registration

- **Present Valid Identification Card (or IQAMA, Driver's License, Passport, Family ID)**
- **Medical history questionnaire will be handed to the donor to fill out and to include his/her signature as consent (Affix ISBT Barcodes).**
- **Queuing number will be given to the donor.**
- **The Donor should notify the registration if the donation will be Voluntary or for specific patient donation.**
- **A brochure will be given to the donor for Pre-Health Education benefits of Blood donation.**



Education

- **Ensure that the donor had met blood donation criteria (Age, Weight, V/S, Hours of sleep, meals, medication taken, did not visit malaria endemic area).**



- **A blood donation, Hepatitis & HIV brochures will be handed to the donor by the registration.**
- **Blood donation withdrawal will be explained at Assessment Area.**

- **A complete health education session will be conducted before donating.**
- **Platelet apheresis instruction will be conducted before donation.**
- **Post donation instruction.**
- **Health Education will be documented in Nursing Flow sheet and acknowledged by the donor.**

Assessment

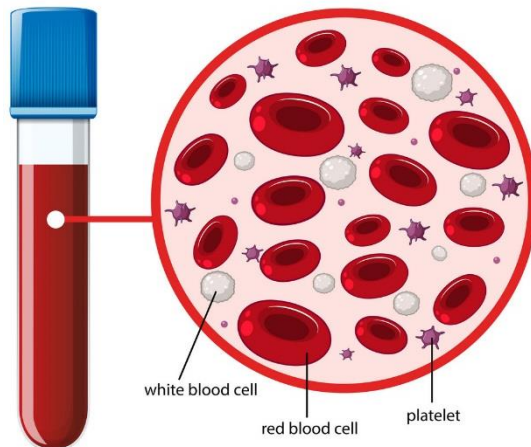
- **Assessment nurse will call the donor with the corresponding queuing number.**
- **Identify donor by stating their three names and ID number.**

- **A confidential review of Donor Medical History and Questionnaire (DMHQ) is conducted to determine the eligibility.**
- **Determine height, weight, blood pressure, temperature and pulse with acceptable range.**



- **For temporary deferral, donor can come back after a certain duration.**
- **In case of permanent deferral, the blood bank physician will explain to the donor the reason.**
- **Check for suitable vein.**

- **Hemoglobin determination using HemoCue machine with acceptable range.**
- **For platelet donors, a 2-3 ml sample of blood will be extracted for CBC before commencing the procedure.**



- **Acceptable hematocrit range is from 35-50 % and platelet count is 150,000 - 450,000/mcl.**
- **Re-check for suitable vein.**

- **Explain the procedure incorporating health education.**
- **Secure Consent.**
- **Affix confidentiality unit sticker in the DMHQ.**
- **Endorse donor to collection area.**

Collection

- **Introduce yourself to donor.**
- **Check and review the DMHQ that have been completed.**
- **Confirm donor identity to verbalize their three names.**
- **Place comfortably on the phlebotomy chair.**

- **Provide privacy and maintain a safe and therapeutic environment.**
- **Prepare the blood bags. Check for any defects, discoloration and check expiration date.**
- **Affix barcodes from the DMHQ to the blood bags.**
- **Inspect arm for suitable vein after hand hygiene.**
- **Prepare the venipuncture site aseptically.**
- **Sterile disposable dressing set will be used to venipuncture procedure.**
- **Connect the blood bag to blood shaker.**
- **Blood donation is about 5 -10 minutes.**



- **Blood shaker will determine the volume of blood to be collected.**
- **Blood samples are taken for serology testing for malaria and ABO.**
- **Observe for any adverse reaction during donation. Nursing Intervention will be applied for mild & moderate adverse reaction.**
- **For severe reaction, blood bank physician will be called; nursing intervention will be applied and will follow physician's further instruction.**
- **If donor developed adverse reaction, procedure will be stopped.**
- **420ml of blood product will be collected as per blood shakers' configuration.**

- **Under bleed will be collected and be sent to component area.**
- **Release tourniquet and withdraw the needle and apply pressure with a sterile cotton ball.**
- **Blood bags will be sealed after completing donation procedure, weigh blood product and send to component area.**
- **Assess donation site, if no bleeding, cover with sterile cotton balls and apply Adhesive dressing.**
- **Comply with KFMC infection control policy.**



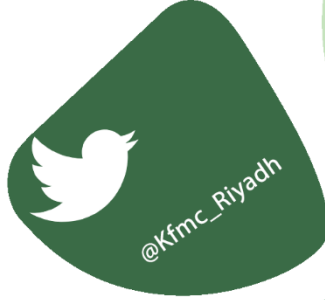
Discharge

- **Check post donation vital signs, record, and document in nursing flow sheet.**
- **Complete the DMHQ and encode in the Hematos System or MED-INFO Donor Data Encoding.**
- **Give post donation health education.**
 - **Whole blood, comes back after two months (4 weeks).**
 - **Platelet apheresis, come back after 2 weeks.**
- **Re-assess the donor's stability before discharge.**
- **Donor will not leave the unit until released by the blood bank staff member.**

لأن الوعي وقاية ..

إدارة التثقيف الصحي

**Transfusion Medicine Department &
Blood Bank**



HEM3.16.000214

