



مدينة الملك فهد الطبية
King Fahad Medical City



Cast Care



When you should come back to hospital?

**Your child's fingers or toes feel numb or cold,
look blue or pale.**



**Your child complains of fever, tingling,
tightness, or worsening pain in the injured
arm or leg.**



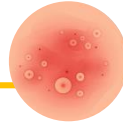
**Your child complains of severe pain when
move the fingers or toes.**



**You smell a bad odor coming from the
cast.**



The skin around the cast edge is red or irritated.



The cast gets soft or cracked.



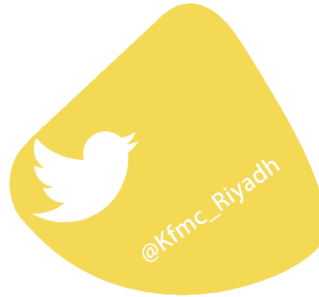
**The medication does not make your child
pain feel better.**



لأن الوعي وقاية ..

إدارة التمريض الصحي

Pediatric Emergency Nursing Section



HEM2.17.000200

