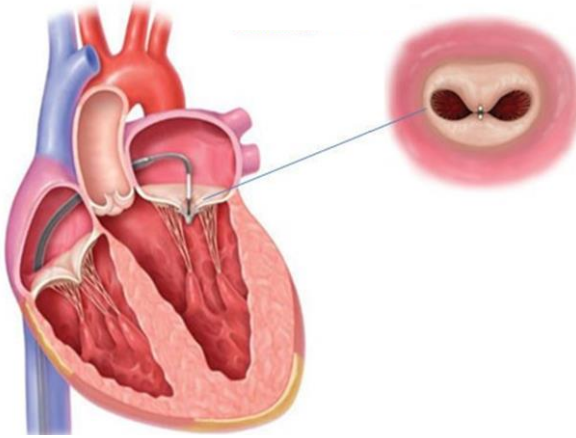




مدينة الملك فهد الطبية  
King Fahad Medical City



## MitraClip Device

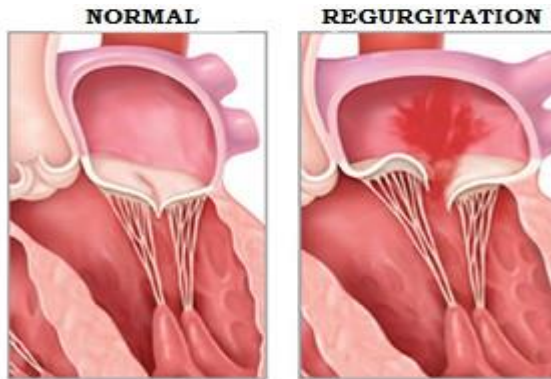
## **What is Atrial Fibrillation?**

**Atrial fibrillation (AF) is a heart condition where the upper chambers of the heart (atria) beat too fast and with chaotic rhythm (fibrillation).**

**This condition can cause blood to pool and form clots in an area of the heart called the left atrial appendage (LAA). If a blood clot formed, it may travel through an artery to the brain and cause a stroke.**

## **What is Mitral regurgitation?**

**It is leakage of blood backward through the mitral valve each time the left ventricle contracts to the left atrium. A leaking mitral valve allows blood to flow in two directions during the contraction.**



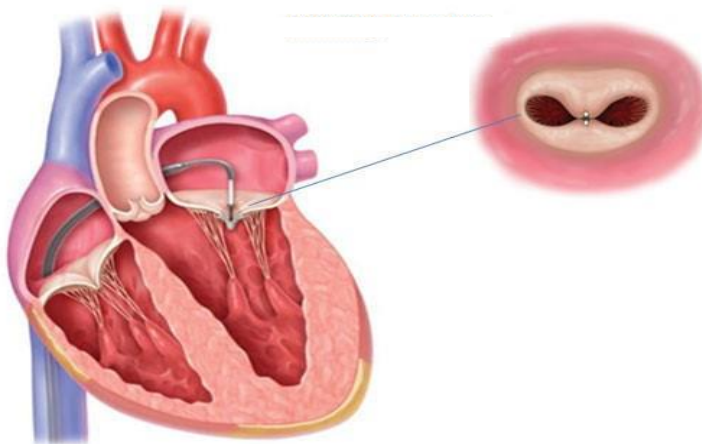
## What are the causes of Mitral regurgitation?

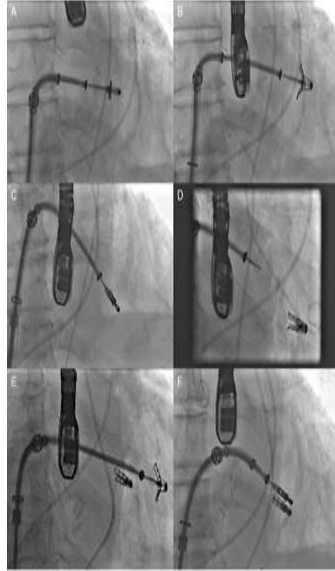
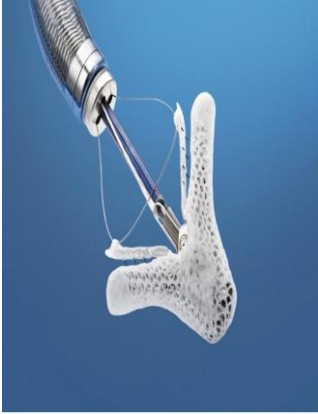
- **Mitral Valve Prolapse.**
- **Rheumatic Fever.**
- **Endocarditis.**
- **Cardiomyopathy.**
- **Heart attack.**

## What is Mitra-Clip Procedure?

The procedure is less invasive than traditional open-heart surgery. Procedures may vary from person to person, but patients are usually released from the hospital within 2 to 3 days.

Patient should experience improvement in the symptoms of mitral regurgitation and quality of life soon after the procedure.





## **How is candidate for the MitraClip Procedure?**

**Patient will be evaluated by specialized doctors, including a cardiac surgeon and a cardiologist, who will review medical history and perform a variety of tests. There are several factors they will take into consideration when deciding, a possible candidate for Mitral Clip therapy, such as patient**

**age, frailty, and the condition of patient heart.**

## **What should patient expect after MitraClip Procedure?**

**Patient will experience significant improvement of his or her symptoms of mitral regurgitation and quality of life soon after your procedure. It is important to discuss what to expect following the procedure with your physician.**

## **How is the Mitraclip Device Implanted?**

**The Mitraclip is inserted through a tube in a vein in the groin. The procedure is done under general anesthesia with trans esophageal echocardiography (TEE) to help in device positioning. The doctor will cross from the right**

**side of the heart to the left side of the heart. Once the position is confirmed in the mitral valve the doctor will release the implant to leave it permanently fixed in your heart.**

### **Post-operative instruction:**

- 1. You will lie flat for 6 hours, please do not move.**
- 2. You won't be able to drive the car for 3 days.**
- 3. Sit down on a chair when praying for 3 days.**
- 4. Limit strenuous physical activity for at least one-month post-procedure.**
- 5. You won't be able to travel with airplane for 3 days.**
- 6. Do not use stairs for 3 days.**

**7. Do not lift heavy objects or put pressure on hand with catheters for 3 days.**

**8. Keep the catheters place clean and dry to avoid infections, in case of bleeding or pus out of catheters place, you should contact your doctor or go directly to emergency.**

**9. Be committed to your medicine, diet regimen and quit smoking.**

### **Follow up After Procedure:**

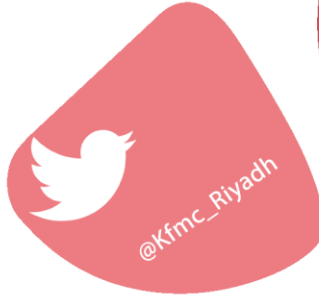
- **Patient will have a follow-up appointment after the procedure.**
- **Short-term anticoagulation therapy may be necessary after mitral valve repair with the Mitra-Clip Device.**



# لأن الوعي وقاية ..

إدارة التثقيف الصحي

Cardiac Center



HEM2.16.000283

