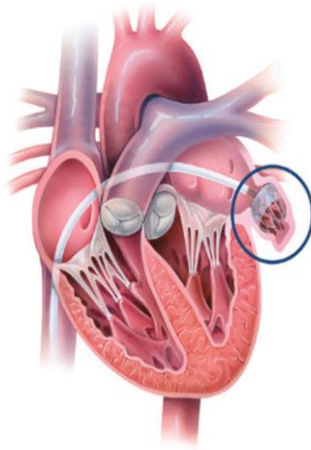




مدينة الملك فهد الطبية  
King Fahad Medical City

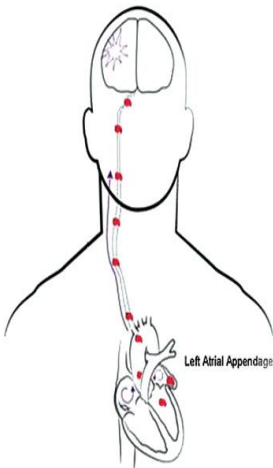


## LAA Closure Device

## What is Atrial Fibrillation?

Atrial fibrillation (AF) is a heart condition where the upper chambers of the heart (atria) beat too fast and with chaotic rhythm (fibrillation).

This condition can cause blood to pool and form clots in an area of the heart called the left atrial appendage (LAA). If a blood clot formed, it may travel through an artery to the brain and cause a stroke.



The blood clot lodges itself in the blood vessels of the brain, restricting blood flow and causing a stroke

The blood clot dislodges from the LAA and travels through the arterial system

The stagnant blood becomes an ideal environment for a blood clot to form

Atrial Fibrillation causes blood to pool in the left atrial appendage

Since the patient has been diagnosed with AF, the doctor will talk about treatment options available. The doctor will also help the patient understanding the risks associated with each option.

For those patients considered suitable for warfarin by their physicians but they have a reason to seek an alternative, the LAA Closure Device is an implant-based alternative to warfarin.

### **What treatment may available?**

An alternative approach to reduce the risk of blood clot formation in the LAA is to remove the appendage from circulation by closing it off, using a form of "plug".

## **Who is suitable for LAA closure device?**

This therapy could be an option for patients who have AF and other factors that increase the risk of stroke, particularly if they have difficulty managing warfarin therapy. Patients who have artificial heart valves or who are likely to need valves may not be suitable.

## **How is the LAA Closure Device Implanted?**

Device Implant is a one-time implant typically performed under general anesthesia.

Similar to a stent procedure, the doctor will guide the device Implant into patient's heart through a flexible tube (catheter) inserted through a vein in patient's upper leg. The device does not require open heart surgery and does not need to be replaced.



The doctor will cross from the right side of the heart to the left side of the heart. Once the position is confirmed, the doctor will release the implant to leave it permanently fixed in patient's heart.

### **Post Procedure Care:**

- After the cardiac catheterization the patient will be shifted into recovery area for observation of vital signs and level of consciousness until the patient condition is stabilized.
- From recovery the patient will be shifted back to his room escort by a nurse.
- The patient should rest in bed after sheath removal for few hours to prevent any bleeding

or hematoma formation which is very painful for the patient.

- Patient will stay in the hospital overnight after the procedure.

### **Follow-up after the procedure:**

- Patient's follow-up appointment within 45 days after the procedure.
- Warfarin will be continued for another 6 weeks after the procedure until a follow-up echo shows satisfactory sealing of the LAA. The patient will then remain on aspirin alone.

# لأن الوعي وقاية ..

إدارة التثقيف الصحي

Patient Education Section – Cardio  
Center



HEM2.16.000270

