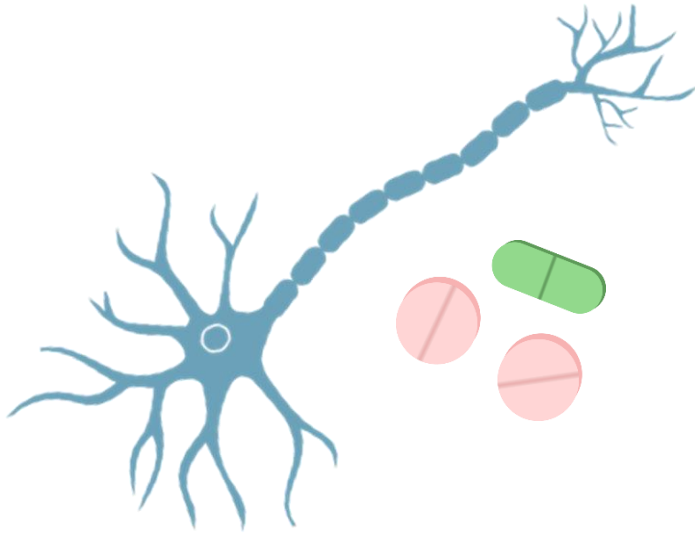




مدينة الملك فهد الطبية  
King Fahad Medical City



## Neuropathy Secondary to Drugs (II)

**Cancer-related neuropathy** is a common long-term health effect impacting **one-third of cancer survivors**. It can result from:

- Tumors compressing on and/or infiltrating the peripheral nerves
- Certain cancer therapies such as surgery, chemotherapy and/or radiation therapy.



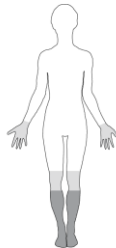
### **What is chemotherapy-induced peripheral neuropathy (CIPN)?**

**It is a debilitating side effect of cancer treatment that may occur when chemotherapeutic agents damage the peripheral nerves that are outside the brain and spinal cord.**

## Chemotherapy agents which may cause CIPN

- **Cisplatin, carboplatin, and oxaliplatin**
- **Paclitaxel, docetaxel, and cabazitaxel**
- **Ixabepilone**
- **Vinblastine, vincristine, vinorelbine, and etoposide**
- **Thalidomide, lenalidomide, and pomalidomide**
- **Bortezomib and carfilzomib**
- **Eribulin**

CIPN symptoms begin in the extremities – the hands and feet – and then move upwards.



# Symptoms

CIPN affects activities of daily living and quality of life

Pain

Burning

Tingling

Numbness

Electric shock

Pins and needles

Temperature sensitivity



## What can I do?

### ➤ Recognize the symptoms early

- **Assess the neuropathy symptoms as soon as possible**
- **Confirm if the neuropathy is related to the cancer therapy, the cancer itself, or a pre-existing neuropathy**
- **Determine if the cancer therapy regimen should be modified to minimize neuropathy's debilitating effects.**

### ➤ Incorporate pain relief and rehabilitative care

### ➤ Protect your hands and feet

- **Wear supportive footwear that also protects from injury**
- **Check temperature of water before you shower or wash your hands**

- **Inspect hands and feet daily for any cuts, abrasions, burns, and injury**

➤ **Prevent falls and fall-related injuries**

**Use handrails, canes, and other assistive devices as needed to help address balance issues, improve mobility and function, and preserve independence**

## Risk factors

- **Age**
- **Co-morbid health conditions**
- **Pre-existing neuropathy**
- **Longer duration of cancer therapy**
- **High cumulative dose**
- **Type of cancer therapeutic agent**

One third of them will develop  
cancer-related neuropathies

## New medicines in development

- **EMA401 (Spinifex)**
- **KRN5500 (DARA BioSciences)**
- **Tetrodotoxin (Wex Pharmaceuticals)**
- **Duloxetine (Eli Lilly)**

# لأن الوعي وقاية ..

إدارة التخفيف الصحي

Anesthesiology department



HEM3.16.000146

